



BAYVIEW
BEACH RESORT
PENANG • MALAYSIA



Grand Ballroom

Plan your monumental banquet style event in our Grand Ballroom that can seat up to 940 guests.

With 991 sq.m, you can even invite 1,300 guests for your theatre seating.

Enjoy the full capacity of our ballroom with its pillarless architecture.



Ballroom Foyer

Our Grand Ballroom comes with a Foyer of its own! Your banquet can be lined up right outside the ballroom.

With more space, you don't have to limit yourself when planning for your big event!



Ballroom Foyer

The foyer of the ballroom is used for various purposes. It can be for guests mingling session or it can be for them to take their buffet.



Ballroom Foyer

We can even open up the foyer to be used for an extravagant event.

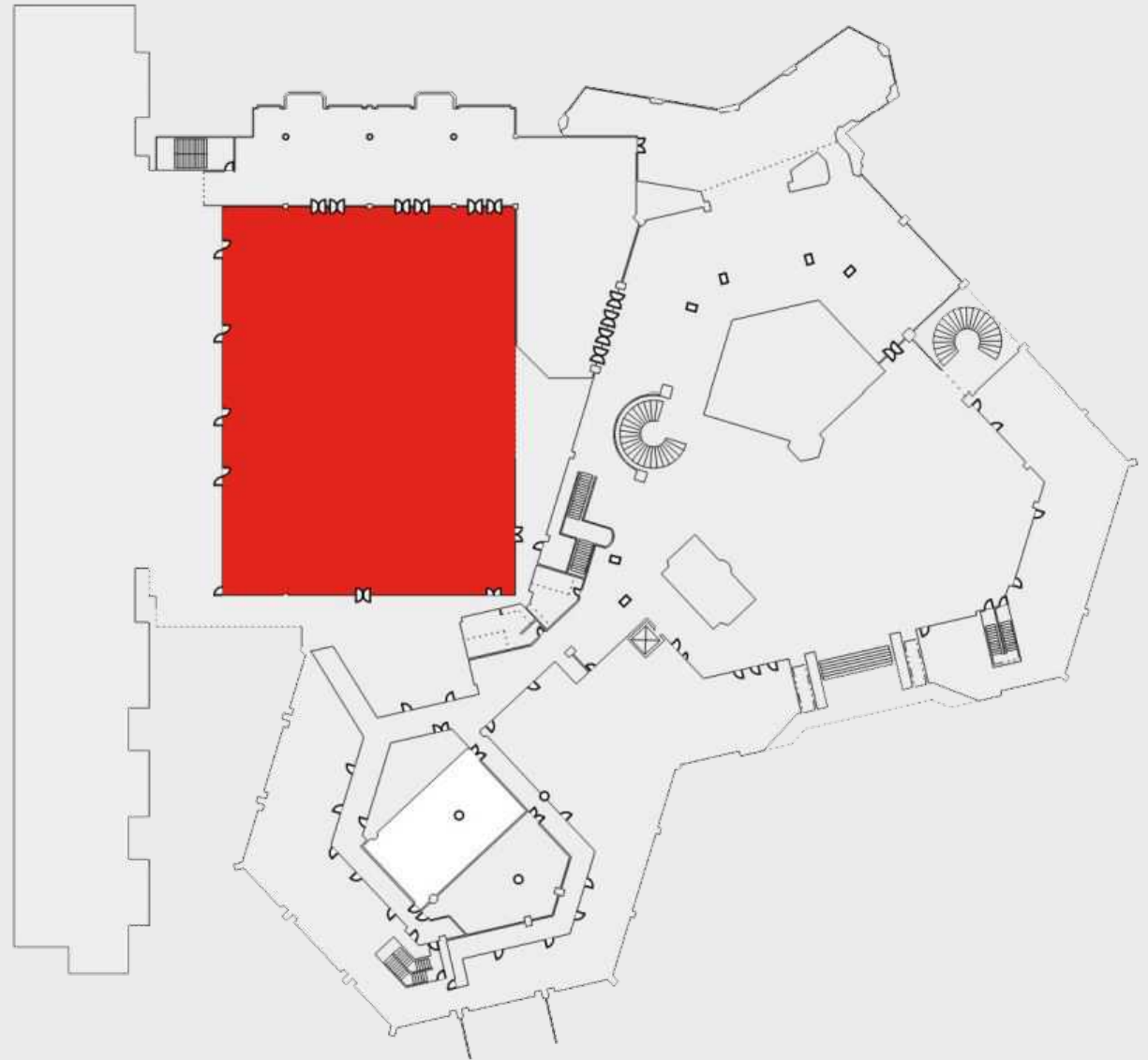
Your guests can even be seated by the foyer and still able to enjoy the event in the ballroom.



Floor Layout

Located at our **Lobby floor**, the perfect location for an extravagant event.

Size: 991 sq.m



Crystal Ballroom

Have an ornate banquet filled with 260 invited guests with catering at your service.

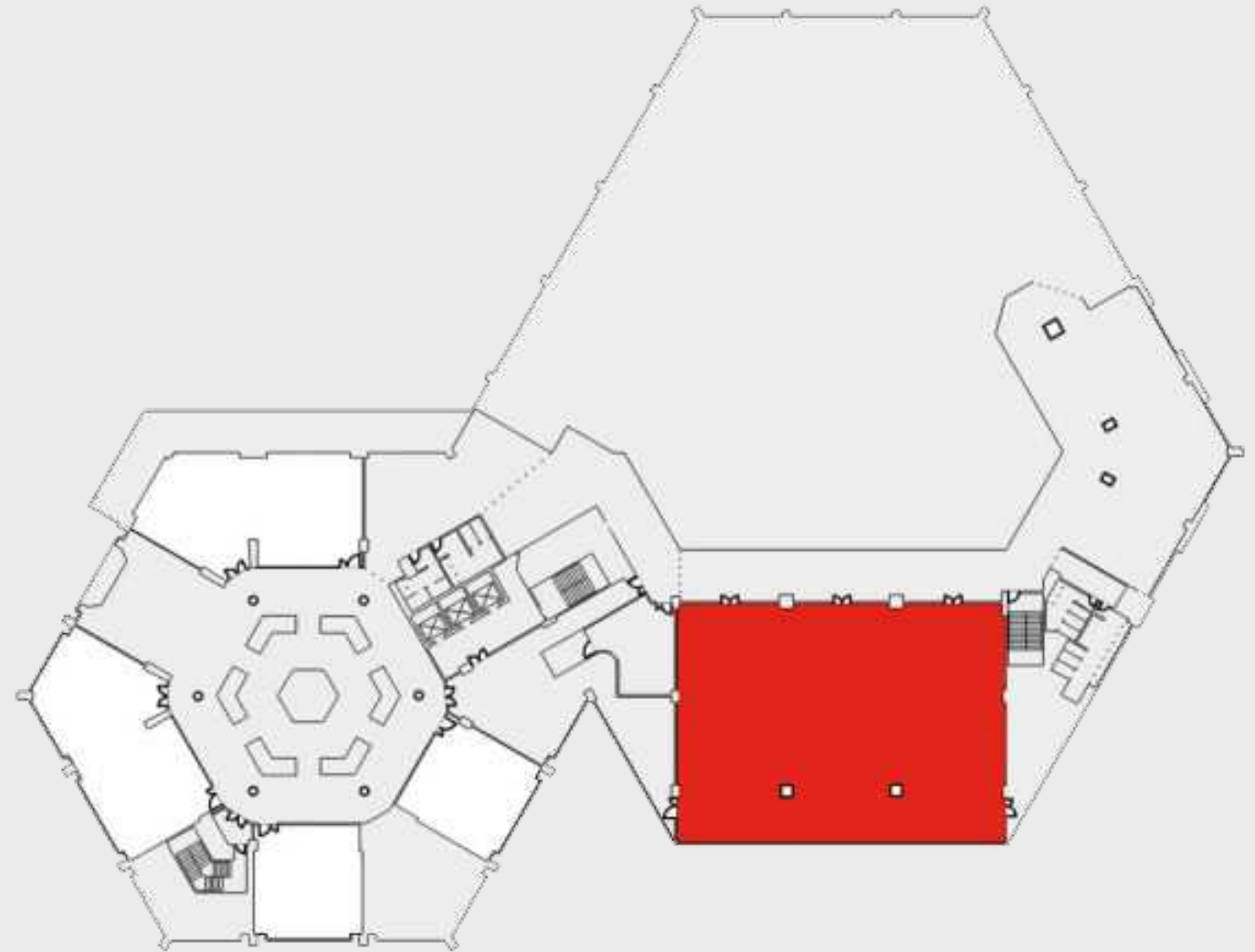
With 426 sq.m of space, go all out on your themed event with our sales team. We will be certain to accommodate to all your needs.



Floor Layout

Located at our **Mezzanine floor**, the ideal location for an elegant evening.

Size: 426 sq.m



Hibiscus Room

Utilize our function room for all sorts of lectures or training sessions.

With classroom-style of 50 seats available to accommodate your guests in our air-conditioned room.

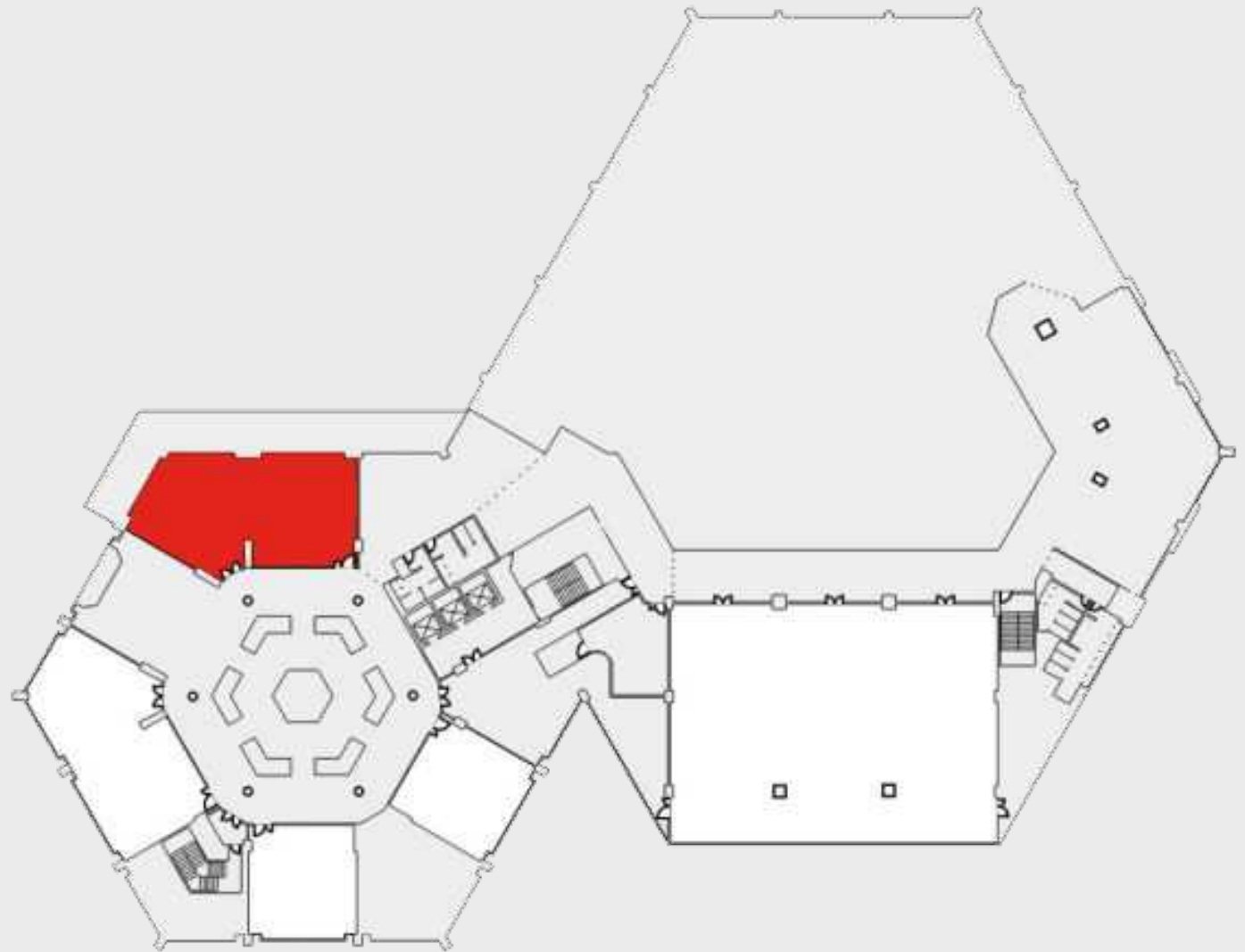
Display your fundamental presentation slides on the LCD screen for a better demonstration.



Floor Layout

Located at our **Mezzanine floor**, with a foyer for your tea-break time.

Size: 135 sq.m



Dahlia Room

Execute an atmospheric presentation with a U-shape style fit for 20 candidates.

Located nearby the tea-break area for immediate access so you can have your professional meeting for as long as you like.

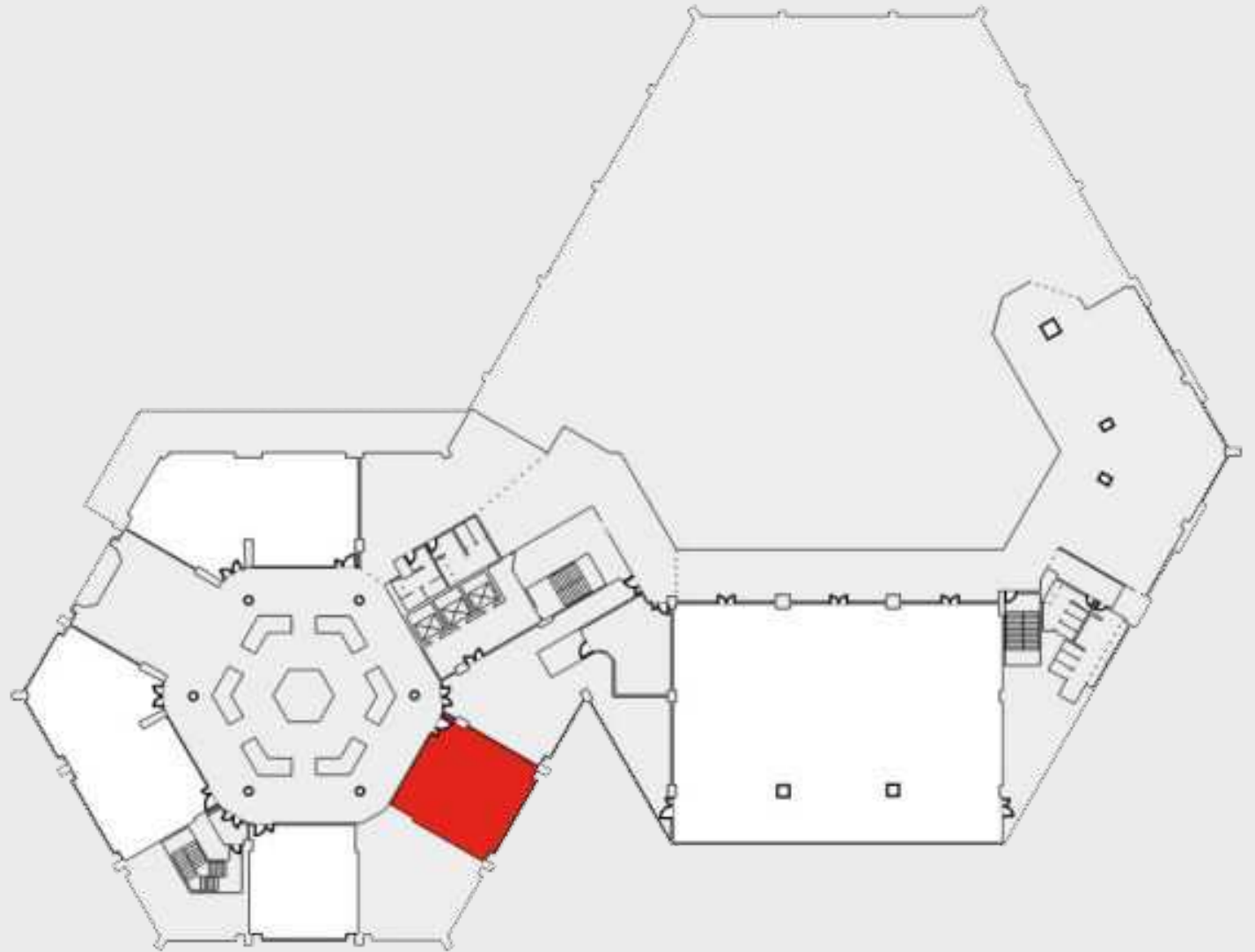
Furthermore, you can also plan for a banquet in our Dahlia room with a seating of 40 invited guest.



Floor Layout

Located at our **Mezzanine floor**, with a coffee break foyer for convenient access.

Size: 66 sq.m



Jasmine Room

With a boardroom set up organized for 20 guests, conduct your conference in style!

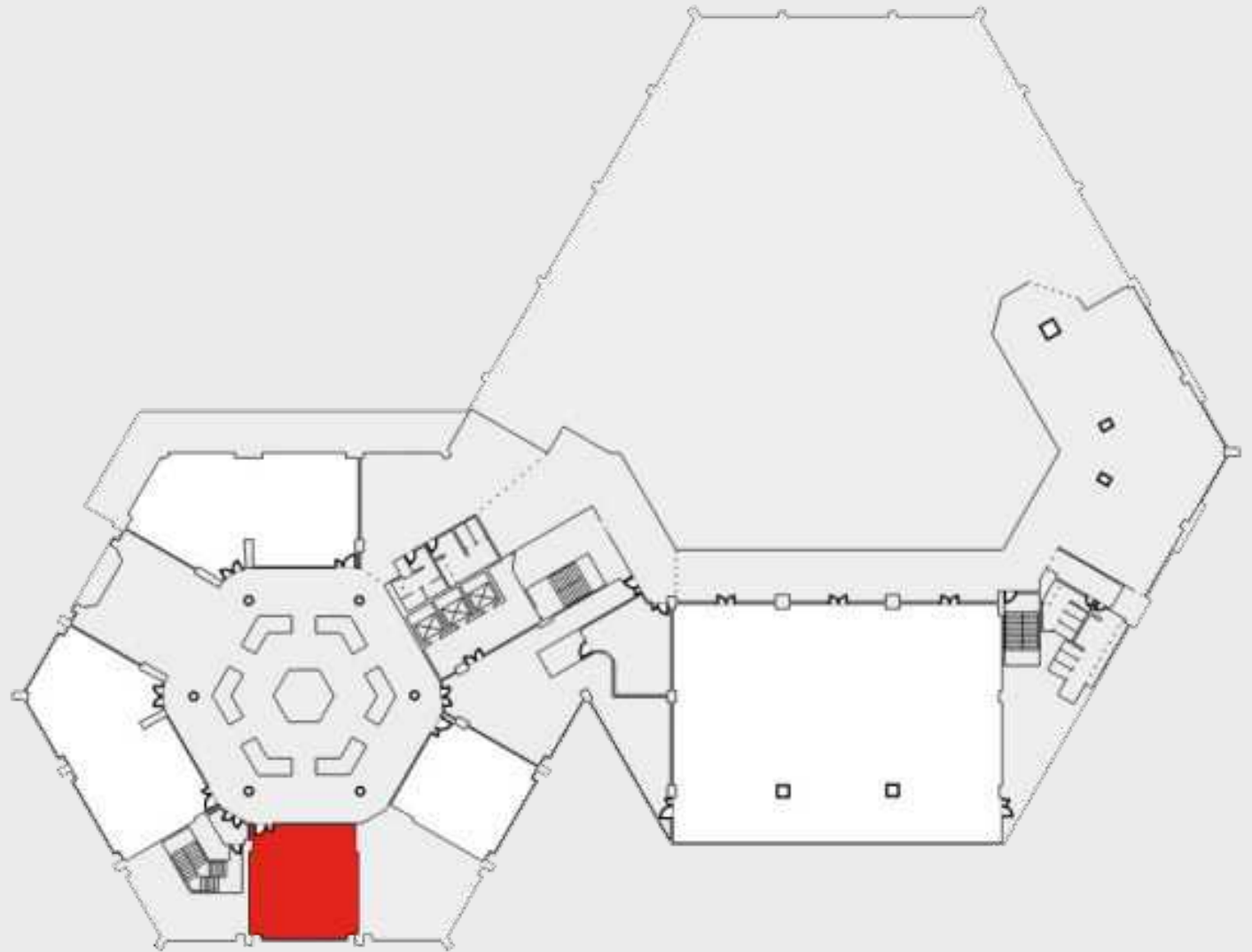
Guaranteed privacy for a more efficient atmosphere. With comfortable seating, your guests will be at the forefront of your meeting able to contribute more to discussions.



Floor Layout

Located at our **Mezzanine floor**, with a foyer for your breakfast needs.

Size: 67 sq.m



Rafflesia Room

Able to accommodate 120 guests and still be spacious enough for the host to walk around the room during their talk.

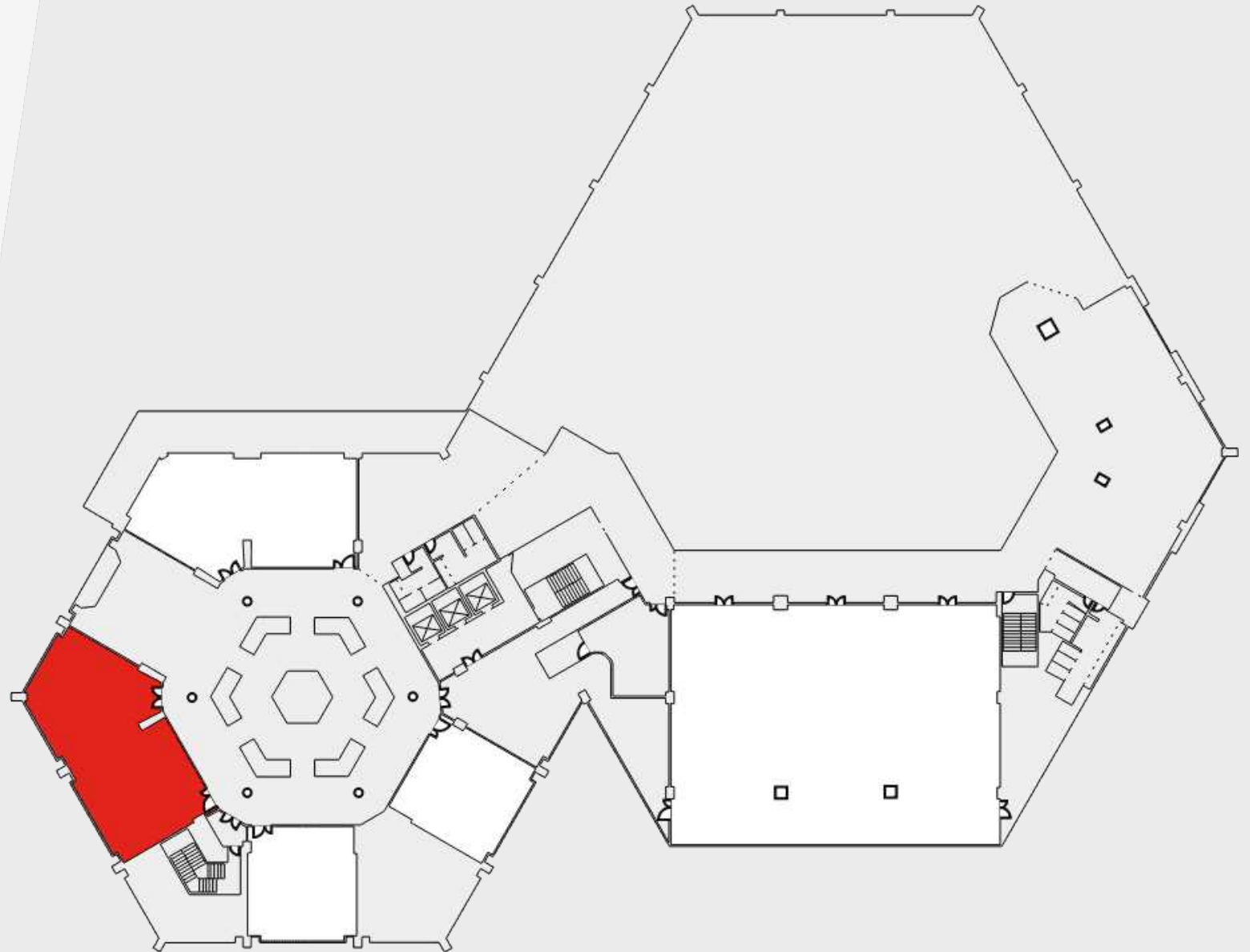
Stay seated in a comfortable air-conditioned room and easily focus on the discussion.



Floor Layout

Located at our **Mezzanine floor**, with a foyer conveniently designed to be right outside your function room.

Size: 135 sq.m



Orchid Room

With 100 guests, you can have a mini-event. Feel the serenity of our Orchid room filled with your joyful guests.

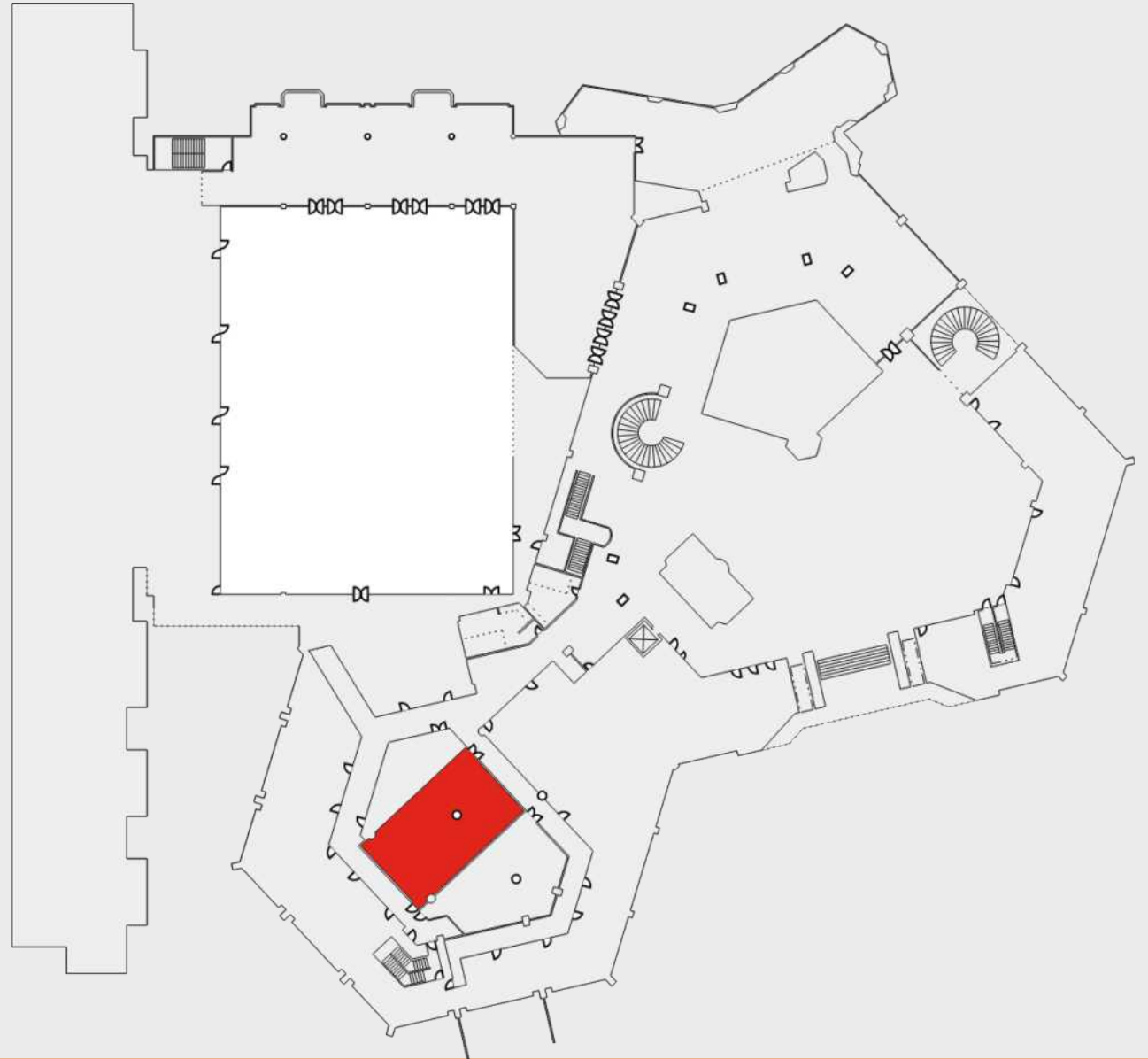
A compact function room will give your audience a better focus on the objective if the function.



Floor Layout

Located at our **Lobby floor**, nearby our entrance, and lift access for your convenience.

Size: 100 sq.m



Oriental Room

With a maximum of 300 guests, the room will still be spacious enough for you to do more activities.

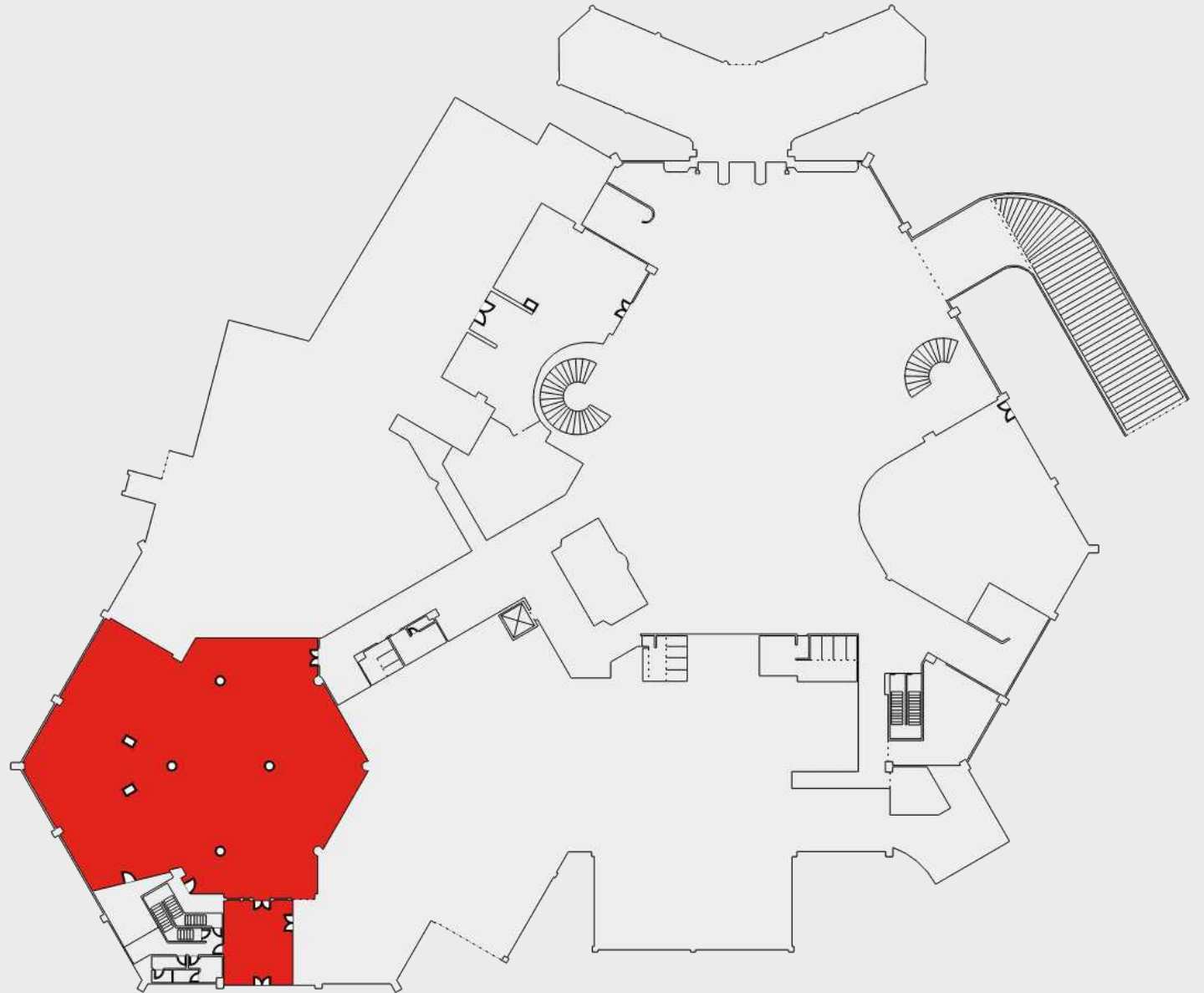
You can even plan your wedding dinner in our Oriental room for absolute privacy from everyone else.



Floor Layout

Located at our **Ground floor**, with our restaurant close by so you can enjoy your meeting right up until lunch time or dinner time visit our restaurant.

Size: 701 sq.m



Conference

Tell us all your planning details on conducting your event and we will provide the best of our services.

Making sure your event goes perfect is our top priority! We'll make sure that you get the theme you dreamed of.



Dinner

Plan your extravagant wedding with us! We'll help you plan for the day of the event from the bottom to the top, so you won't have to worry about anything.

A detailed discussion on your wants and needs is the utmost important to make sure that your event is smooth sailing.



Meetings

Conducting a conference is serious business! However, it does not have to be solemn.

The set up of your conference is also an important part. Tell us your idea and we will provide you with the best outlook.



Meetings

Arrange your meeting using our classroom style setup. Easier to concentrate and have a discussion amongst themselves in this fit-for-all table arrangement.



Meeting & Banquet Capacity

Meeting Room	Theatre	U-Shape	Board	Classroom	Cocktail	Banquet	Level	Height	Surface	Stage (L x W x H) (ft)	Dance Floor (L x W) (ft)
Grand Ballroom	1300	—	—	650	800	940	Lobby	5.1m (17ft)	991 sq.m (10,667 sq ft)	36 x 16 x 3	9 x 33
Crystal Ballroom	280	60	—	180	250	260	Mezzanine	5.4m (18ft)	426 sq.m (4,585 sq ft)	18 x 16 x 2	—
Oriental Ballroom	280	40	—	150	300	250	Ground	2.7m (9ft)	701 sq.m (7,546sq ft)	16 x 8 x 1	—
Hibiscus	120	40	35	50	—	70	Mezzanine	2.7m (9ft)	135 sq.m (1,453 sq ft)	—	—
Rafflesia	120	40	40	50	—	70	Mezzanine	2.7m (9ft)	135 sq.m (1,453 sq ft)	—	—
Jasmine	40	20	15	24	—	40	Mezzanine	2.7m (9ft)	67 sq.m (721 sq ft)	—	—
Dahlia	40	20	15	24	—	40	Mezzanine	2.4m (8ft)	66 sq.m (710 sq ft)	—	—
Orchid 1	100	40	—	60	—	60	Lobby	2.7m (9ft)	100 sq.m (1,076 sq ft)	—	—
Garden	—	—	—	—	1300	1000	—	—	1100 sq.m (11,840 sq ft)	—	—